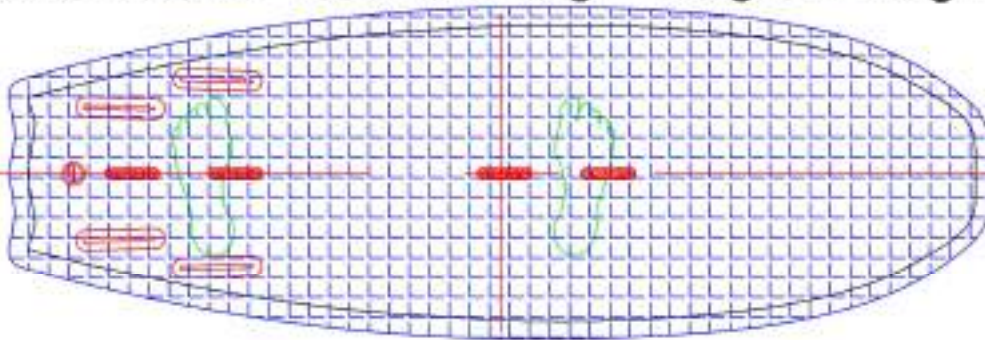
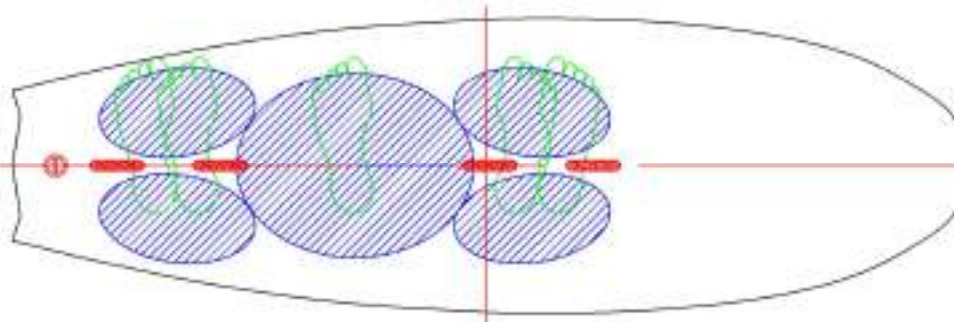


## 5'4" v1 Sandwich Deck = 129g Faser

2 x Area: 0.82m<sup>2</sup> HTC 0/90 50g = 100g/m<sup>2</sup> = 82g Faser



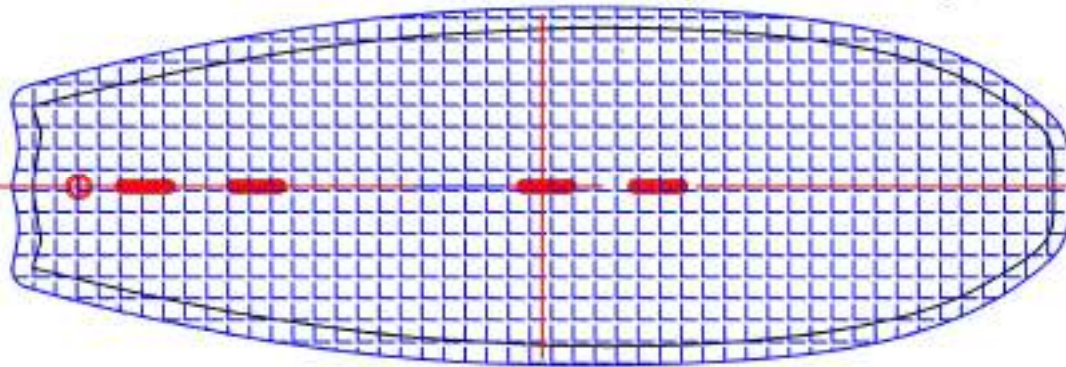
1 x Area: 0.24m<sup>2</sup> HTC 45/45 = 200g/m<sup>2</sup> = 47g Faser



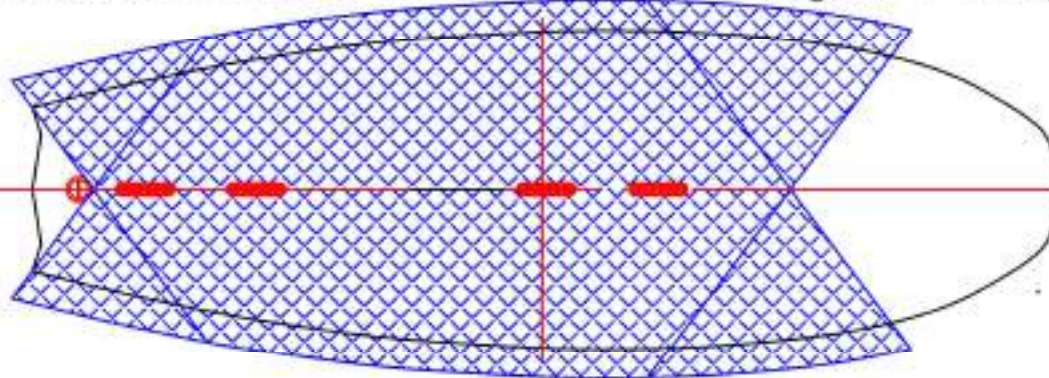
**2mm AIREX® C70.75 & Rails 2mm Rollenkork**

## 5'4" v1 Face Sheet Deck = 302g Faser

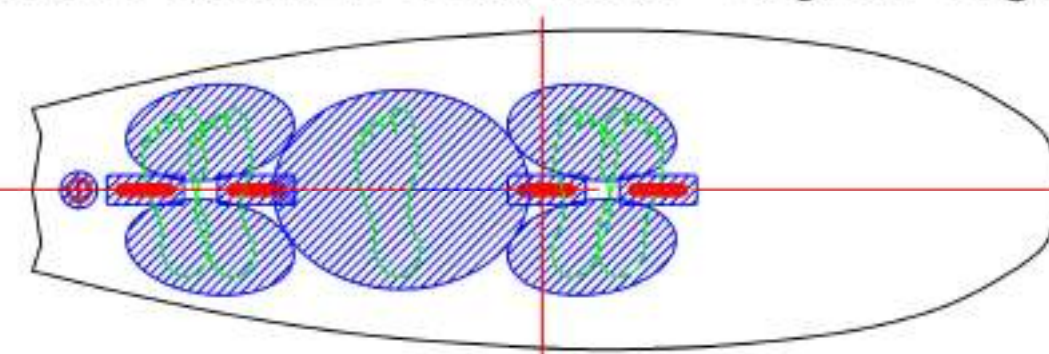
2 x Area: 0.81m<sup>2</sup> E-Glas 0/90 - 104g/m<sup>2</sup> = 208g/m<sup>2</sup> = 170g Faser



2 x Area: 0.62m<sup>2</sup> E-Glas 45/45 = 80g/m<sup>2</sup> = 100g Faser



1 x Area: 0.30m<sup>2</sup> E-Glas 45/45 = 80g/m<sup>2</sup> = 24g Faser



2 x Area: 0.043 m<sup>2</sup> E-Glas 0/90 = 104g/m<sup>2</sup> = 8g Faser

